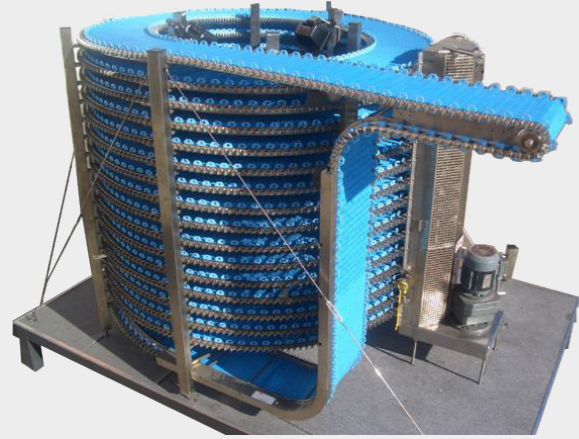


产品介绍 Product description

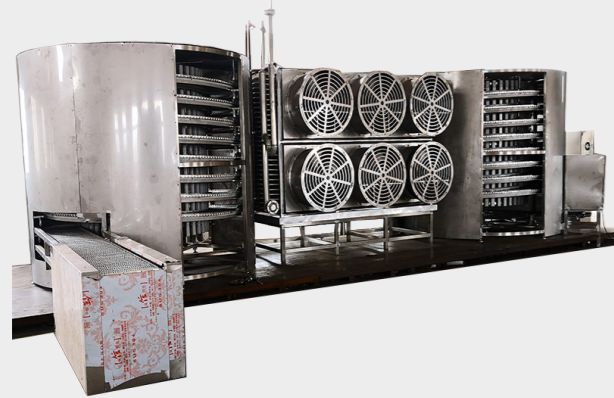


BJ-SDX系列螺旋式速冻机是一种技术先进、适用面广、占地面积小、冻结能力大的节能型快速冻结装置，在普通型的基础上，作了进一步的完善和改进。采用模块化或整体化一次灌泡成型的地坪，使设备性能和结构更完善、稳定性、保温性得到进一步提高和加强。

适用范围：调理食品、冰淇淋、面点、水产类、分割肉禽、油炸类食品、小包装食品等。

BJ-SDX series spiral quick freezing machine is an energy-saving quick freezing device with advanced technology, wide application, small floor area and large freezing capacity. It has been further improved and improved on the basis of ordinary type. The modular or integrated floor formed by one-time foam filling is adopted to further improve and strengthen the equipment performance and structure, stability and thermal insulation.

Scope of application: prepared food, ice cream, pastry, aquatic products, segmented meat and poultry, fried food, small packaged food, etc.



产品特点 Product features

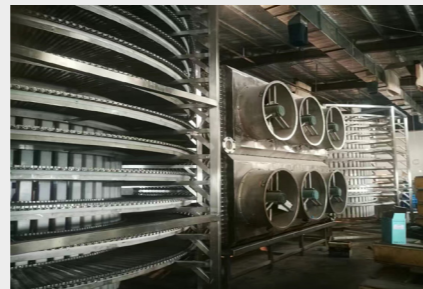
大量地采用机械加工件，消除了因焊接件产生的焊接变形、焊接应力集中导致的传动累积偏差、传动的不一致性。

A large number of machined parts are used to eliminate the cumulative deviation and inconsistency of transmission caused by welding deformation and welding stress concentration.



装置内部结构（除电机外）全部采用不锈钢和铝合金材料，卫生条件好，配有优秀的清洗系统，使装置内无积物污染。

The internal structure of the device (except the motor) is made of stainless steel and aluminum alloy, with good sanitary conditions and excellent cleaning system, so that there is no accumulated pollution in the device.



装机容量较一般隧道式降低35%，整机耗冷量少，提高少冻结的经济性。

Compared with the general tunnel type, the installed capacity is reduced by 35%, the cooling capacity of the whole machine is less, and the economy of less freezing is improved.



采用先进的电脑触摸控制系统，触摸屏采用国产昆仑通态产品，PLC采用日本欧姆龙产品，变频器、电子接近开关、电器元件采用国产知名品牌，整个控制面板实行无按钮操作，操作方便简洁。

The advanced computer touch control system is adopted, the touch screen adopts domestic Kunlun open state products, the PLC adopts Japanese Omron products, the frequency converter, electronic proximity switch and electrical components adopt domestic well-known brands, and the whole control panel is operated without buttons, which is convenient and concise.



产品参数 Technical parameters

BJ-SDX₁ 单螺旋式速冻机主要技术参数
BJ-SDX₁ Main technical parameters of single screw quick freezer

型号 Model	冻结能力 Freezing capacity (kg/h)	冻结时间 Freeze time (min)	装机功率 Installed power (kw)	耗冷量 Cold consumption (kw)	外形尺寸 Overall dimensions L×W×H (m)	传送带宽 Transmission bandwidth (m)
BJ-SDX ₁ -200	200	6~60	6.55	35.00	6.8×2.38×3.0	0.33
BJ-SDX ₁ -300	300	6~60	9.55	52.50	6.8×2.38×3.6	0.33
BJ-SDX ₁ -400	400	6~60	13.50	72.00	6.8×3.3×3.0	0.48
BJ-SDX ₁ -500	500	6~60	20.20	99.00	6.8×3.3×3.8	0.48

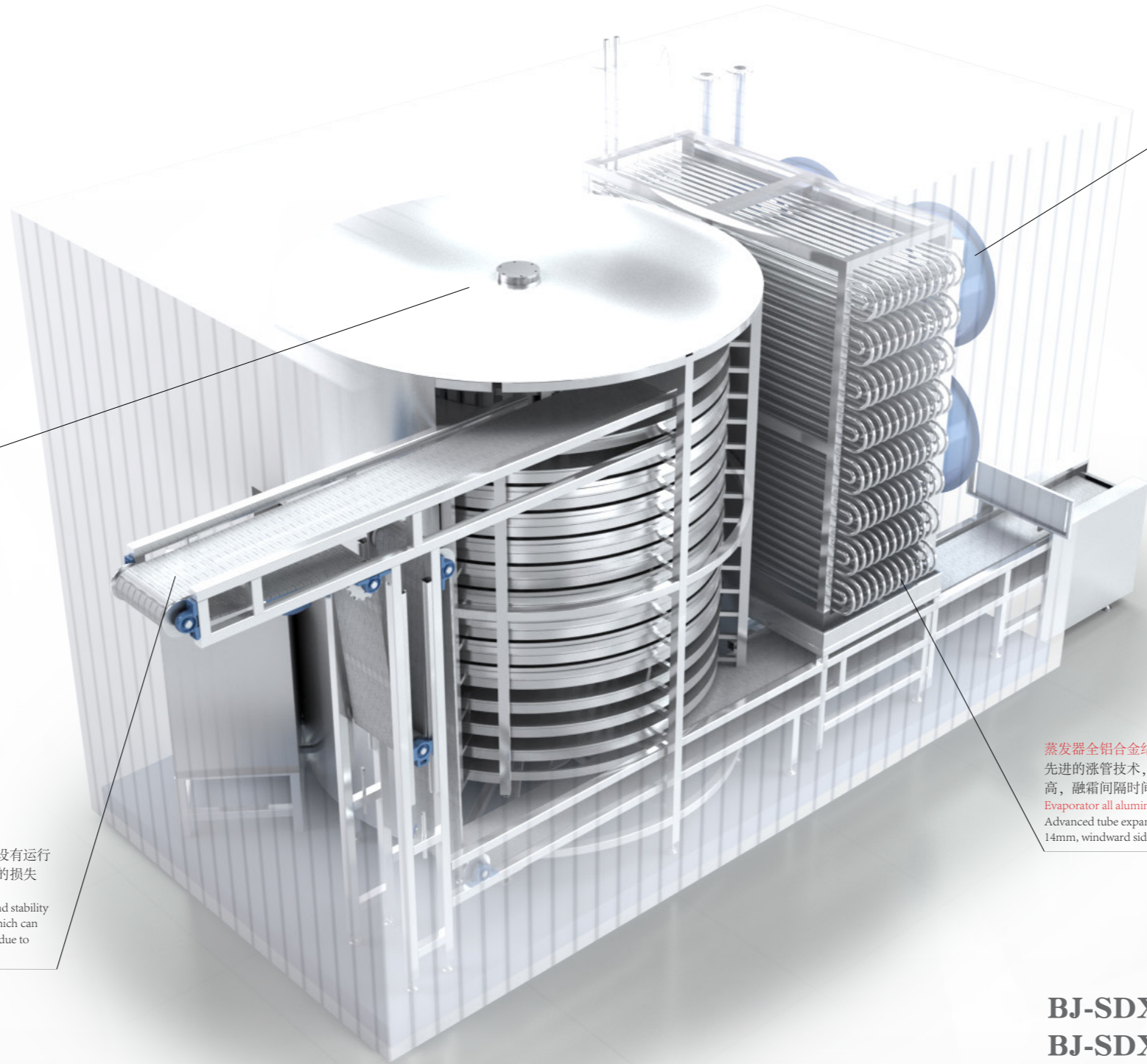
BJ-SDX₂ 双螺旋式速冻机主要技术参数
BJ-SDX₂ Main technical parameters of double screw quick freezer

型号 Model	冻结能力 Freezing capacity (kg/h)	冻结时间 Freeze time (min)	装机功率 Installed power (kw)	耗冷量 Cold consumption (kw)	外形尺寸 Overall dimensions L×W×H (m)	传送带宽 Transmission bandwidth (m)
BJ-SDX ₂ -500	500	12~120	18.35	99	11.5×4.0×3.0	0.48
BJ-SDX ₂ -1000	1000	12~120	26.95	175	14.5×5.0×3.0	0.71
BJ-SDX ₂ -1500	1500	12~120	33.75	263	14.5×5.0×3.8	0.71
BJ-SDX ₂ -2000	2000	12~120	43.50	350	16.5×5.68×3.5	0.81
BJ-SDX ₂ -3000	3000	12~120	57.50	480	16.5×5.68×4.8	0.81

注：进料温度：≤+15℃，出料温度：-18℃
冻结温度：-37℃±2℃
耗冷量：按冷凝温度+35℃，蒸发温度-45℃计算

Note: Feed temperature: ≤+15℃, discharge temperature: -18℃
Freezing temperature: -37℃±2℃
Cooling consumption: calculated according to condensation temperature +35℃, evaporation temperature -45℃

Structure 结构示意图 diagram



特殊工艺制作的转鼓
椭圆度允差控制在1mm以内，消除了因制造累积误差导致的传送带运行速度不一致性的缺陷
Drum made by special process
The allowable deviation of ovality is controlled within 1mm, which eliminates the inconsistency of conveyor belt running speed caused by manufacturing cumulative error

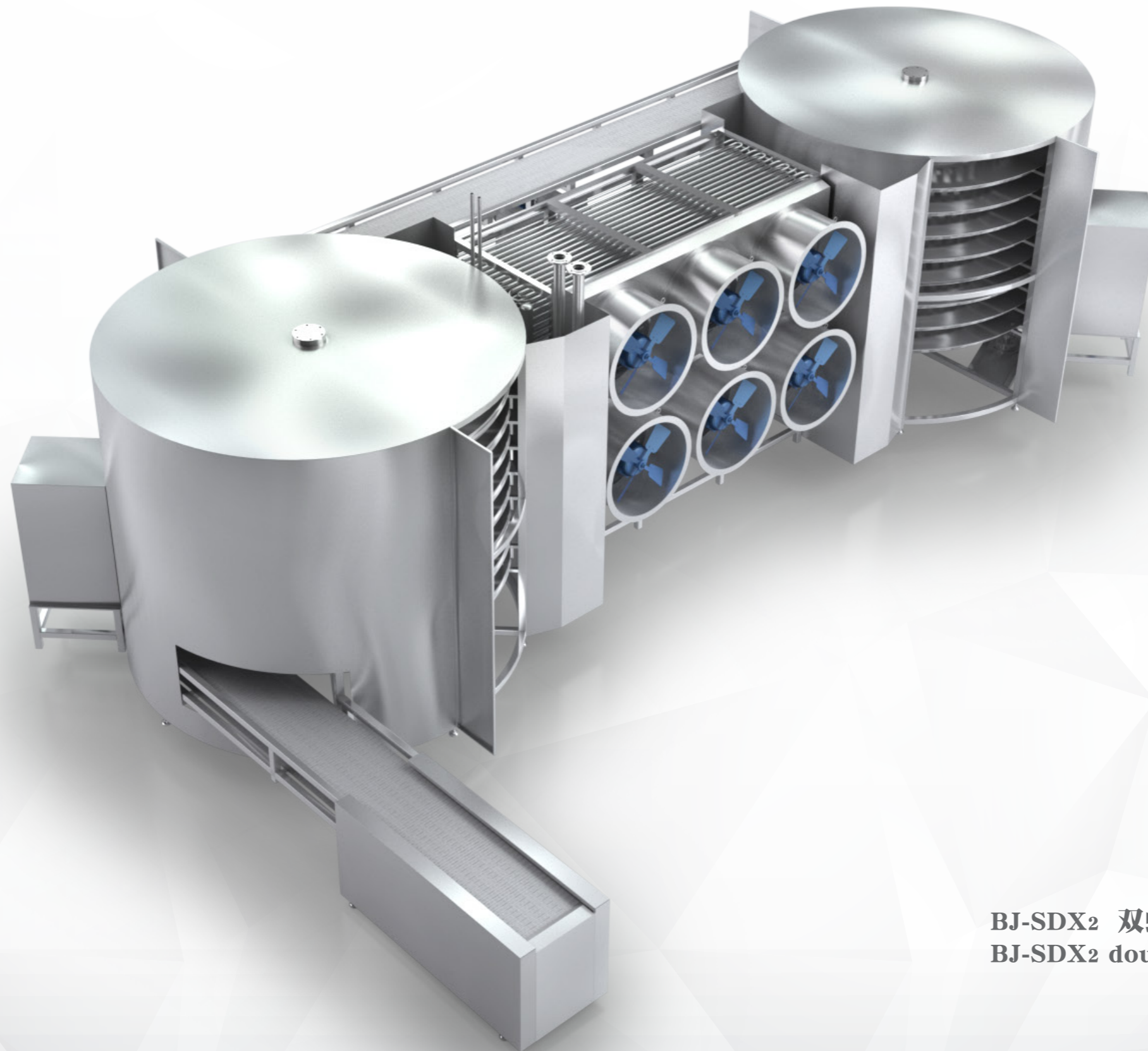
特殊定做的传送网带
抗延伸率更强，耐磨强度更高，提高设备的使用寿命和稳定性，且网带设有运行自检装置，随时可以监控网带运行状况，消除因网带运行不良的不必要的损失
Special customized conveyor belt
It has stronger elongation resistance and higher wear strength, improves the service life and stability of the equipment, and the mesh belt is equipped with operation self inspection device, which can monitor the operation status of the mesh belt at any time to eliminate unnecessary losses due to poor operation of the mesh belt

风机
轴流式风机、不锈钢风筒，不锈钢叶片，水平送风，风量大，冻品换热系数高，降温快速均匀
Fan
Axial flow fan, stainless steel air duct, stainless steel blade, horizontal air supply, large air volume, high heat exchange coefficient of frozen products, fast and uniform cooling

蒸发器全铝合金结构
先进的胀管技术，迎风侧片距20mm，中间14mm，出风侧10mm，热效率高，融霜间隔时间长
Evaporator all aluminum alloy structure
Advanced tube expansion technology, windward side sheet spacing of 20mm, middle 14mm, windward side 10mm, high thermal efficiency and long defrosting interval

BJ-SDX1 单螺旋速冻机
BJ-SDX1 Single screw quick freezer

Structure
结构示意图 diagram



BJ-SDX2 双螺旋速冻机
BJ-SDX2 double screw quick freezer